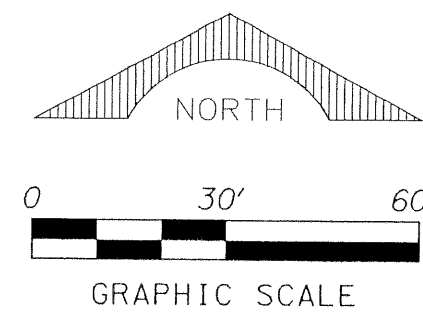


PERIMETER

SURVEYING & MAPPING
 Prepared by: Jeff S. Hodapp, P.S.M.
 Certificate of Authorization No. LB7264
 951 Broken Sound Parkway, Suite 320
 Boca Raton, Florida 33487
 Tel: (561) 241-9988
 Fax: (561) 241-5182



RENAISSANCE COMMONS, A P.U.D.

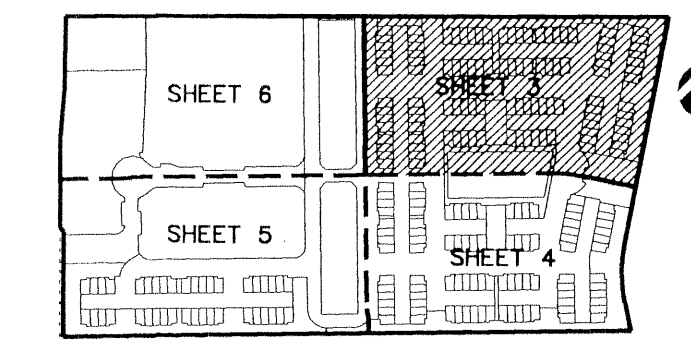
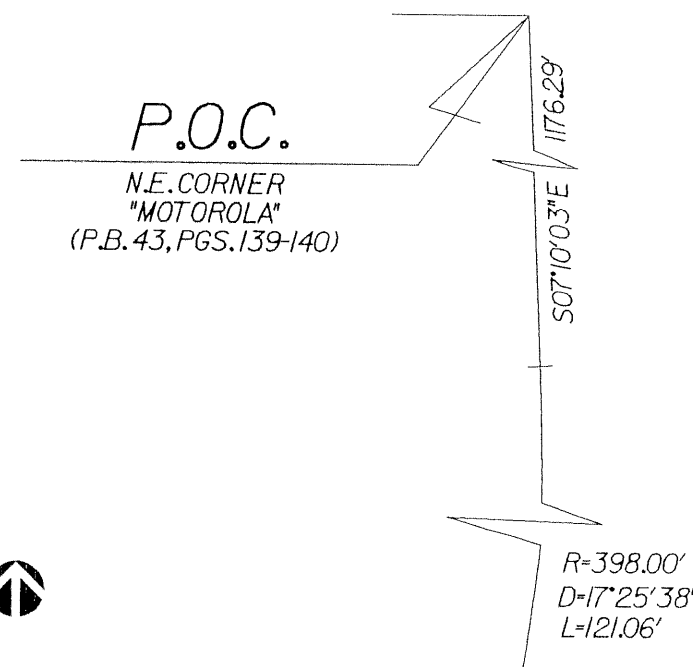
A REPLAT OF A PORTION OF "MOTOROLA" (P.B. 43, PGS. 139-140, P.B.C.R.)

IN SECTION 20, TOWNSHIP 45 SOUTH, RANGE 43, EAST,

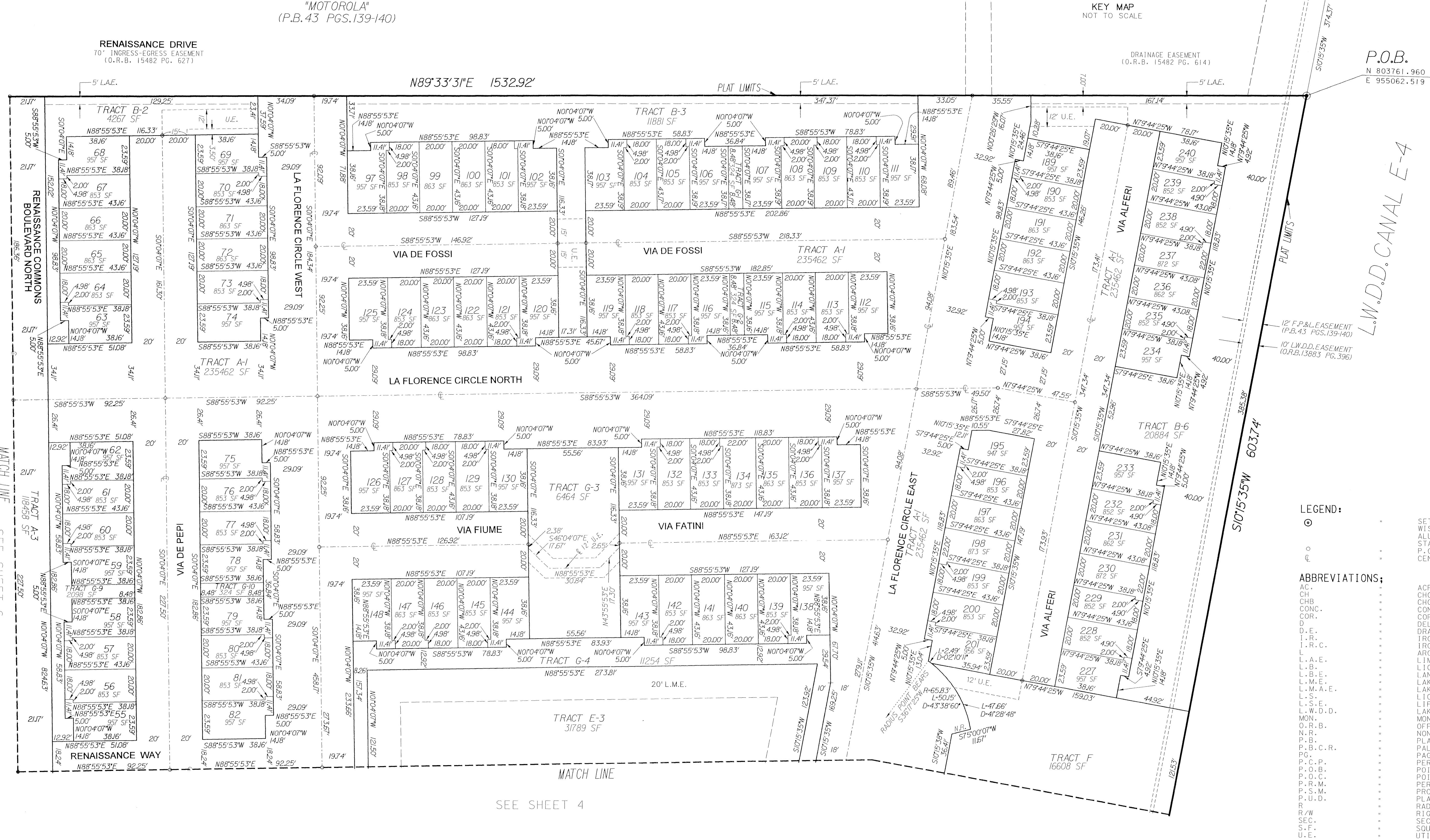
CITY OF BOYNTON BEACH, PALM BEACH COUNTY, FLORIDA.

APRIL, 2004

59



SHEET 3 OF 6



- LEGEND:**
- SET P.R.M. (UNLESS OTHERWISE NOTED)-4" DIAMETER ALUMINUM DISK IN CONC. MON. STAMPED #LB7264 P.C.P. CENTERLINE
 -
 -
 -
- ABBREVIATIONS:**
- AC. ACRES
 - CH. CHORD
 - CHB. CHORD BEARING
 - CONC. CONCRETE
 - COR. CORNER
 - D. DELTA (CENTRAL ANGLE)
 - D.E. DRAINAGE EASEMENT
 - I.R. IRON ROD
 - I.R.C. IRON ROD AND CAP
 - L. LENGTH
 - L.A.E. LIMITED ACCESS EASEMENT
 - L.B. LICENSED BUSINESS
 - L.B.E. LANDSCAPE BUFFER EASEMENT
 - L.M.E. LAKE MAINTENANCE EASEMENT
 - L.M.A.E. LAKE MAINTENANCE ACCESS EASEMENT
 - L.S. LICENSED SURVEYOR
 - L.S.E. LIFT STATION EASEMENT
 - L.W.D.D. LAKE WORTH DRAINAGE DISTRICT MONUMENT
 - O.R.B. OFFICIAL RECORDS BOOK
 - N.R. NON-RADIAL
 - P.B. PLAT BOOK
 - P.B.C.R. PALM BEACH COUNTY RECORDS
 - PG. PAGE
 - P.C.P. PERMANENT CONTROL POINT
 - P.O.B. POINT OF BEGINNING
 - P.O.C. POINT OF COMMENCEMENT
 - P.R.M. PERMANENT REFERENCE MONUMENT
 - P.S.M. PROFESSIONAL SURVEYOR & MAPPER
 - P.U.D. PLANNED UNIT DEVELOPMENT
 - R. RADIUS
 - R/W. RIGHT-OF-WAY
 - SEC. SECTION
 - S.F. SQUARE FEET
 - U.E. UTILITY EASEMENT

MATCH LINE SEE SHEET 6

MATCH LINE
SEE SHEET 4